



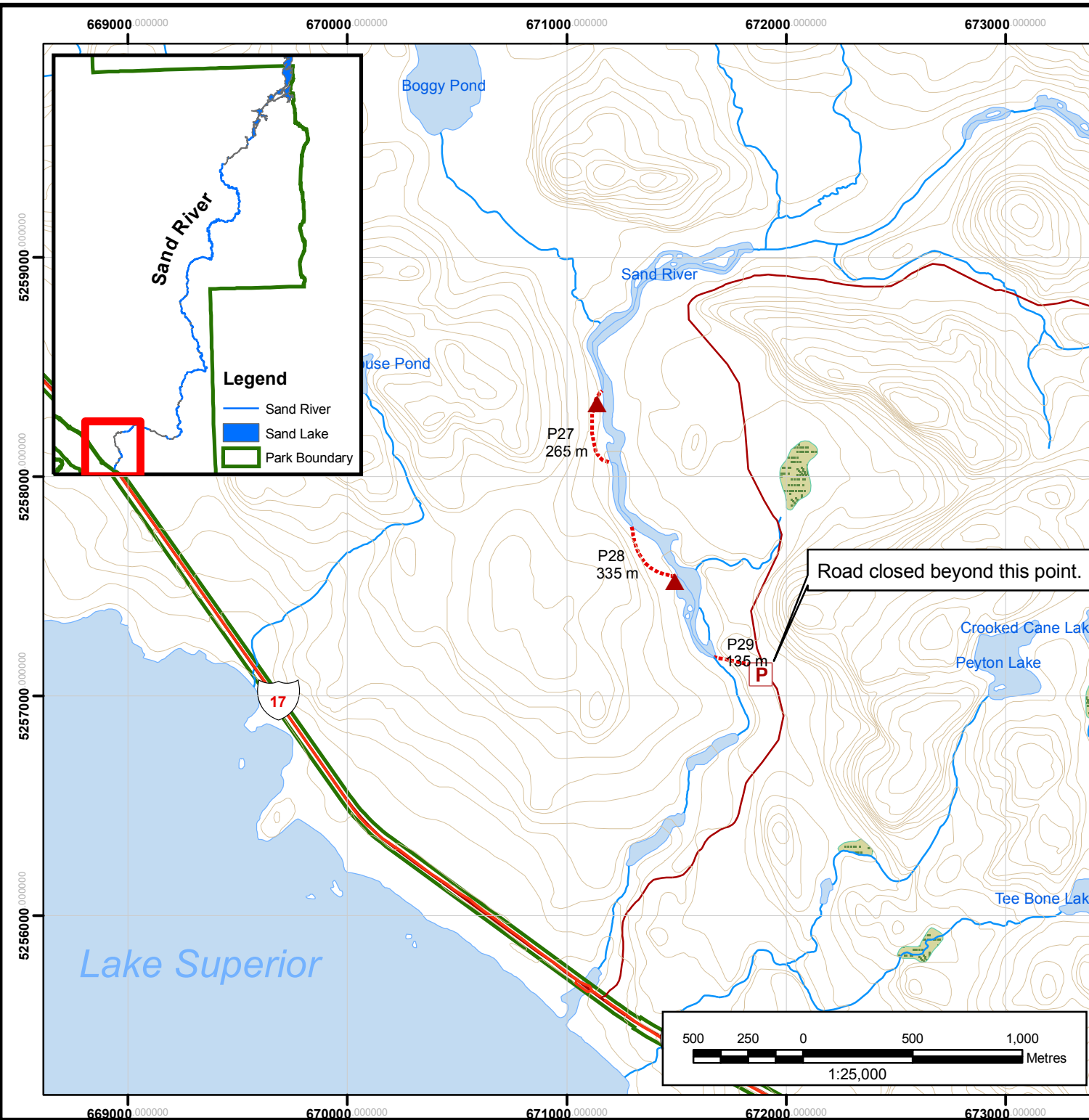
# Lake Superior

## Sand River Part 9 of 9

The bottom of portage 28 joins the top end of Pinguisibi Trail.

Portage 29 is the last portage, leading uphill to a parking and pick-up area on the Sand River Road (the take-out point). The 2 km road leads directly to Hwy 17.

Below this takeout portage the Sand River cascades over falls and rapids which are not navigable, down to Lake Superior.



Road closed beyond this point.

### Legend

- Parking Lot
- Designated Campsite
- Contour (20 metre or 65.5 ft intervals)
- Canoe Route
- Portage
- Lakes and Large Streams
- Wetlands
- Park Boundary
- Highway 17



This map should not be relied on as a precise indicator of routes or locations, nor as a guide to navigation. The Ontario Ministry of Natural Resources (OMNR) shall not be liable in any way for the use of, or reliance upon, this map or any information on this map.

April 2007

